

CONCORD OIL COMPANY, INC.

147 LOWELL ROAD POST OFFICE BOX 368
 CONCORD, MASSACHUSETTS 01742
 978-369-3333

RESIDENTIAL HEATING SERVICE AGREEMENT 2002-2003 SEASON

Plan A ANNUAL MAINTENANCE

Cost (all parts extra)

\$ 94.95

Should be performed each year and includes the following service:
 (excludes G.E., Timken and Units Firing @ 3 gal.-Hr. or More)

- | | |
|---|--|
| 1. Clean boiler or furnace | 8. Adjust for clean fire; smoke test |
| 2. Clean and adjust electrodes & cad cell | 9. Check and flush low water cut off |
| 3. Clean burner fan | 10. Lubricate motor, burner, blower, circulators |
| 4. Inspect smoke pipe | 11. Test all controls - tighten oil fittings |
| 5. Test draft and adjust draft regulator | 12. Conduct efficiency test |
| 6. Clean or replace pump strainer (parts) | 13. Check air filter |
| 7. Replace nozzle & oil filter (parts) | 14. Check safety shutdown on primary control |

HOT WATER HEATER - - oil fired
 SECOND UNIT

Additional Cost
 Additional Cost

\$ 79.95
 \$ 79.95

Plan B ANNUAL MAINT. WITH NO CHARGE FOR LABOR DURING NORMAL WORKING HOURS, FOR ONE YEAR

Cost (all parts extra)

\$190.00

Also includes all functions as listed in Plan A

For systems with burners under 10 years of age, no service labor, involving operation of the following parts listed:

- | | | |
|-------------------|------------------------------|---------------------|
| 1. Aquastat | 6. Stack or circulator relay | 11. Draft regulator |
| 2. Pressuretrol | 7. Fan and burner motor | 12. Smoke pipes |
| 3. Electrodes | 8. Fuel oil pump | 13. Cad cell |
| 4. Nozzle | 9. Transformer | 14. Pump strainer |
| 5. Ignition leads | 10. Standard type thermostat | |

Plan C ANNUAL MAINT. WITH NO CHARGE FOR LABOR & PARTS FOR ONE YEAR — Cost: \$250.00

Also includes all functions as listed in Plan A

For systems with burners under 10 years of age, no charge for labor, during normal working hours, and no charge for parts as listed below:

- | | | |
|-------------------|------------------------------|--------------------------|
| 1. Electrodes | 6. Burner motor to 1/7 HP | 11. Smoke pipes to 6 ft. |
| 2. Nozzle | 7. Fuel oil pump | 12. Cad cell |
| 3. Ignition leads | 8. Stack or circulator relay | 13. Pump strainer |
| 4. Pressuretrol | 9. Standard type thermostat | |
| 5. Transformer | 10. Draft regulator | |

OPTIONS PERFORMED AT TIME OF ANNUAL MAINTENANCE:

- | | | |
|---|------------------------|----------|
| 1. FOR HOT WATER SYSTEMS ONLY:
Purge system. Insert water conditioner, drain and recharge expansion tank. | Additional <u>Cost</u> | \$ 50.00 |
| 2. FOR STEAM SYSTEMS ONLY:
Add a water conditioner to improve steam generation of water, and improve function of low water cut off, automatic feeder, and steam traps. | Additional <u>Cost</u> | \$ 25.00 |
| 3. ANTI-FREEZE TEST:
Check before cold weather to assure required level of protection | Additional <u>Cost</u> | \$ 25.00 |

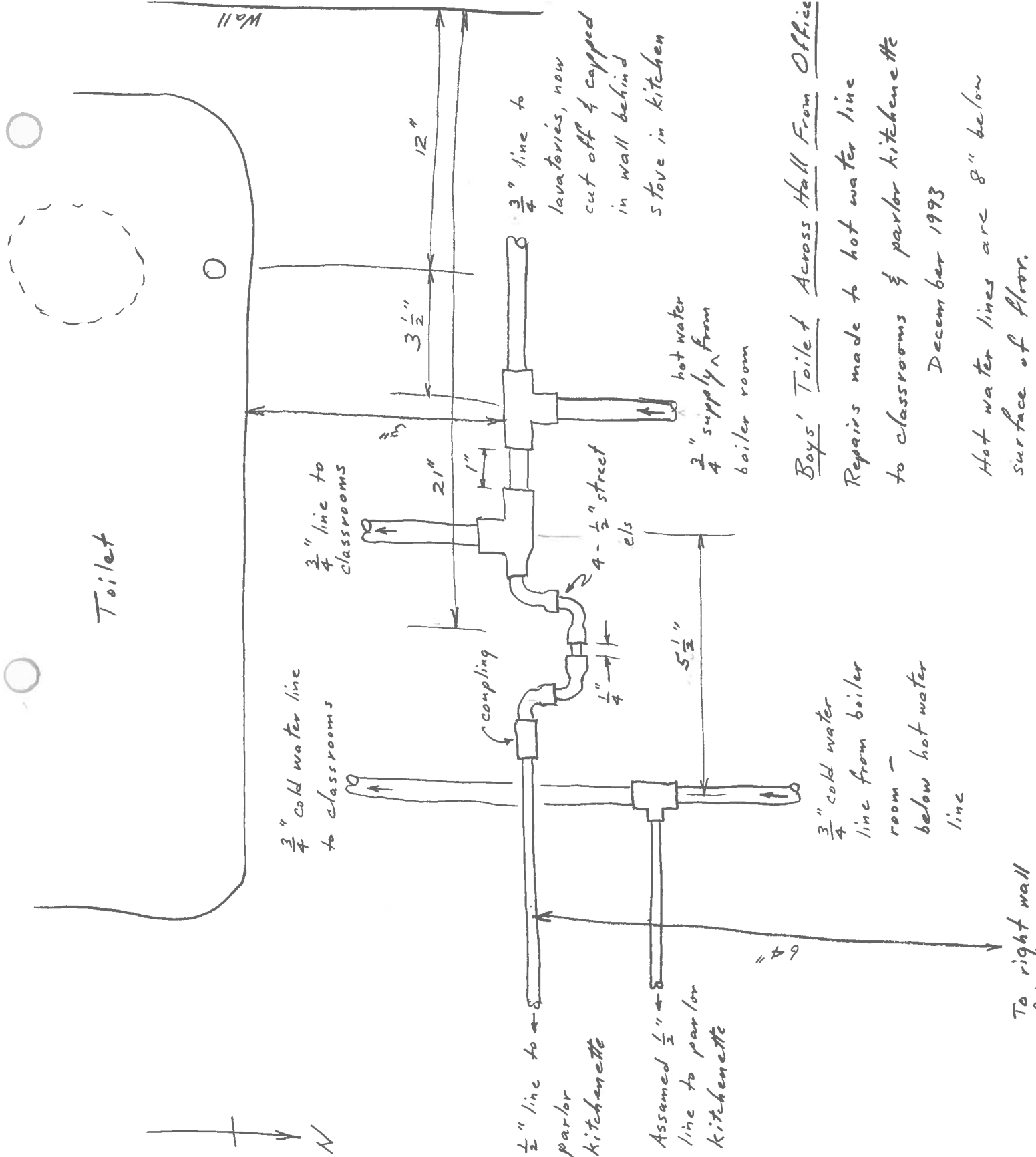
ALL WORK GUARANTEED FOR 30 DAYS AGAINST RELATED CALL-BACK.

WATER RELATED PARTS ARE NOT INCLUDED IN ANY OF THE ABOVE PLANS

COSTS BASED ON WORK PERFORMED DURING NORMAL WORKING HOURS OF MONDAY THRU FRIDAY — 7:45 A.M. - 4:45 P.M.

OVERTIME, NIGHTS, WEEKENDS & HOLIDAYS ARE BILLED AT OVERTIME LABOR RATES.

Normal Hours	\$65.00
Overtime, nights, weekends, & holidays	\$89.00
Service rate	One hour minimum
Efficiency test or evaluation	One hour minimum
Large commercial and residential boilers	@ hourly rate



Toilet

Wall



$\frac{3}{4}$ " cold water line to classrooms

$\frac{2}{4}$ " line to classrooms

$\frac{1}{2}$ " line to parlor kitchenette

Assembled $\frac{1}{2}$ " line to parlor kitchenette

$\frac{3}{4}$ " cold water line from boiler room - below hot water line

$\frac{3}{4}$ " line to lavatories, now cut off & capped in wall behind stove in kitchen

hot water $\frac{3}{4}$ " supply from boiler room

Boys' Toilet Across Hall From Office

Repairs made to hot water line to classrooms & parlor kitchenette

December 1993

Hot water lines are 8" below surface of floor.

To right wall